

CONVEYOR ACCESSORIES
SERIES BU40

Wheel track



CONVEYOR ACCESSORIES
SERIES BU40

Wheel track



Application area

The track is universally applicable and suitable for light and medium-heavy materials. It can be used in gravity conveyors, pushing and also as side guide. Different wheel pitches can be selected.

Medium-heavy materials to be conveyed

If medium-heavy goods have to be handled, the wheel track can be equipped with steel wheels.

Sensitive materials

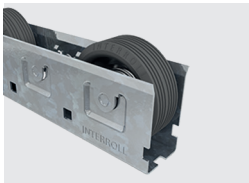
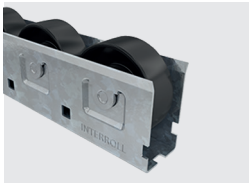
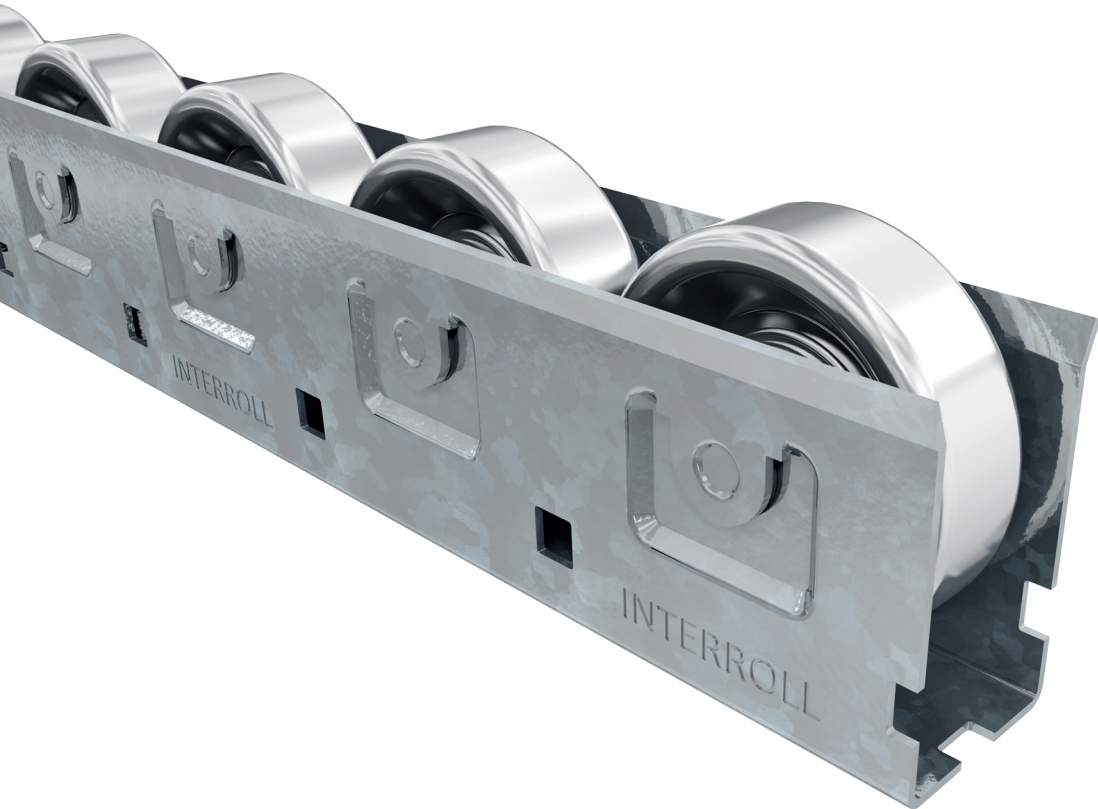
To transport goods with critical surfaces, polymer wheels with covered rubber gasket can be used which minimize the risk of damages.

Good corrosion protection

The wheel track is made of zinc-plated steel.

Easy installation

The wheels can easily be inserted in the track with a snap-in function.



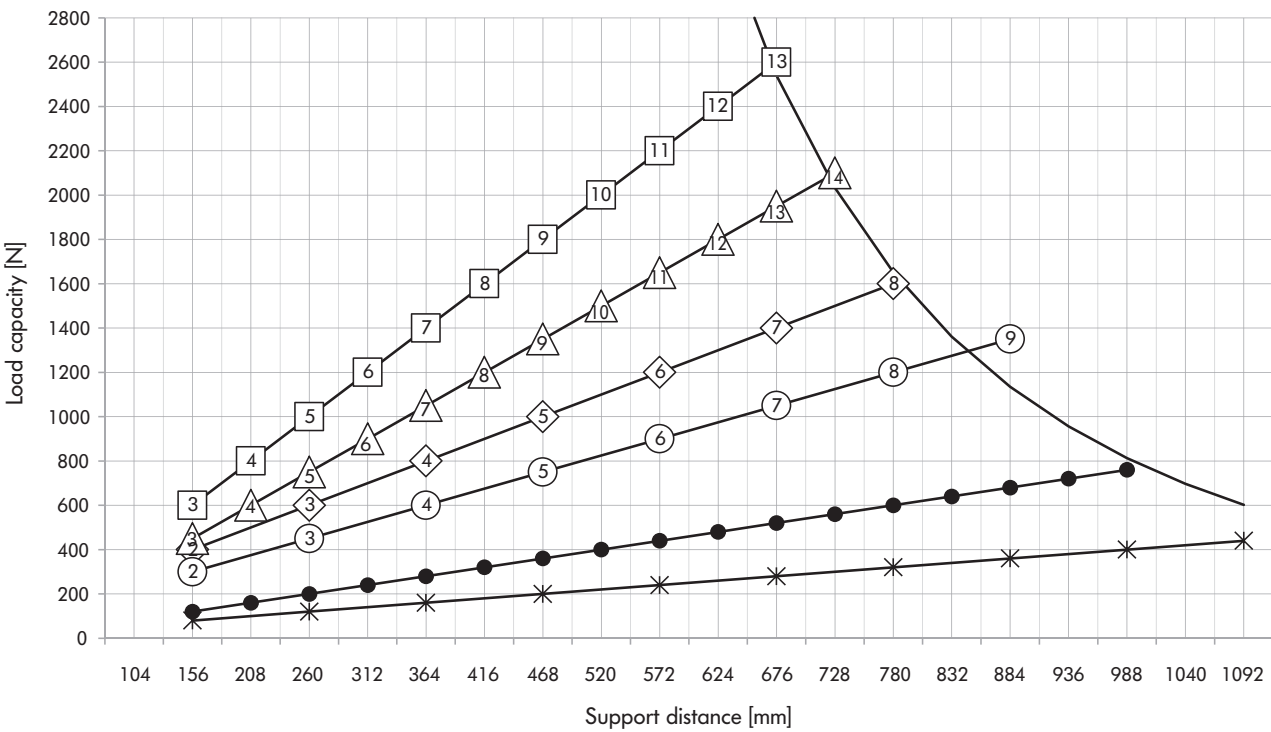
Technical data

General technical data		
Wheels used	Polymer wheel (to series 2130 or 2160)	Steel wheels (after series 2200)
Platform	1100	1200
Max. load capacity	1500 N	2600 N
Max. conveyor speed	1 m/s	1 m/s
Temperature range	0 to +40 °C	−30 to +40 °C
Wheel pitch	52 mm, 104 mm	52 mm, 104 mm
Wheel track wall thickness	1.2 mm	1.2 mm
Min. length	156 mm	156 mm
Max. length	2496 mm	2496 mm
Hub inside diameter	8.2 mm	8.2 mm
Material		
Wheel track	Zinc-plated steel	Zinc-plated steel
Anti-static version	No	Yes (< 10°Ω)



Load capacities of series BU40

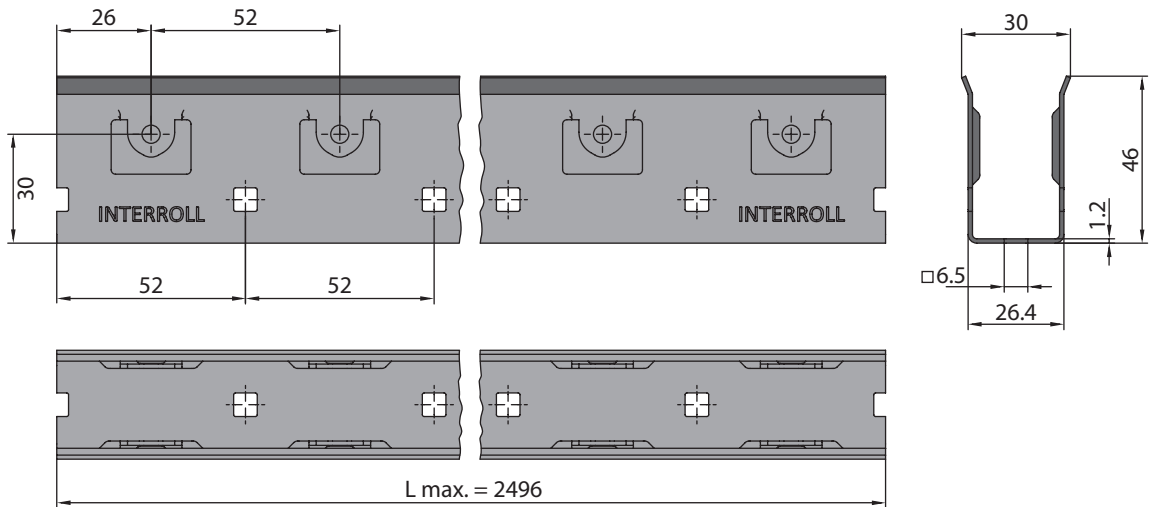
The load capacity table refers to a temperature range from -30 to +40 °C for steel wheels and to a temperature range from 0 to +20 °C for polymer wheels. The load depends on the selected wheel type (polymer or steel), the selected roller pitch (52 or 104 mm), and the distance from the support cross ties under the wheel track.



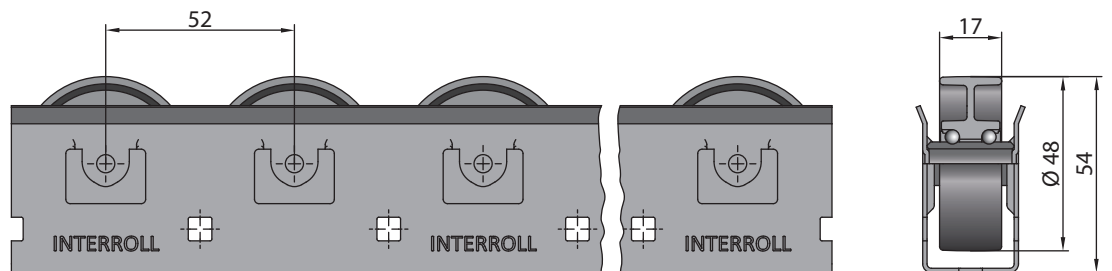
- BU40 profile with max. 2 mm bending
- Series 2200: Number of wheels with 52-mm pitch
- ◇ Series 2200: Number of wheels with 104-mm pitch
- △ Series 2130: Number of wheels with 52-mm pitch
- Series 2130: Number of wheels with 104-mm pitch
- Series 2160: Number of wheels with 52-mm pitch
- * Series 2160: Number of wheels with 104-mm pitch

Dimensions

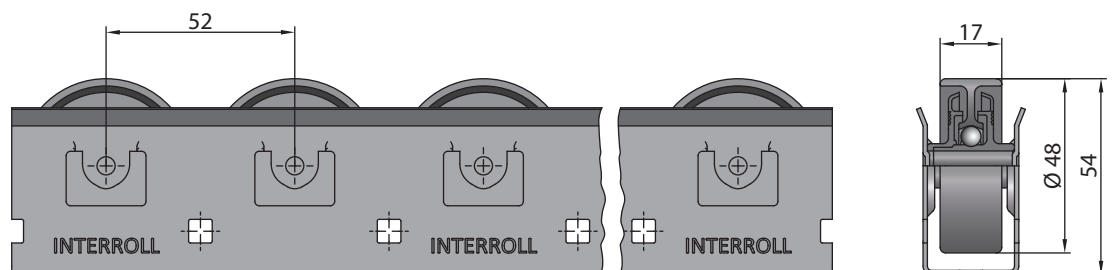
Track without wheel



Track with wheel of series 2130



Track with wheel of series 2160

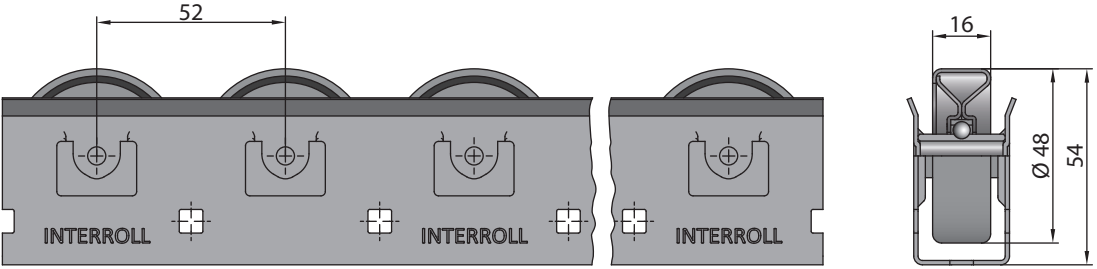


CONVEYOR ACCESSORIES
SERIES BU40

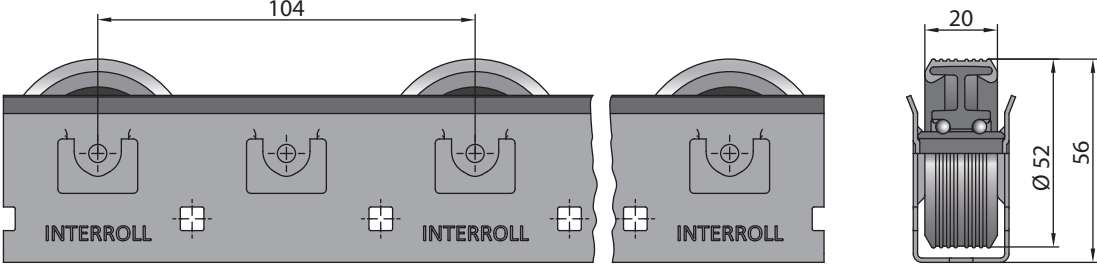
Wheel track



Track with wheel of series 2200



Track with wheel of series 2130 with rubber gasket



Track with wheel of series 2200 with rubber gasket

