

CONVEYOR ACCESSORIES SERIES BU50

Roller track



Application area

The track is universally applicable and suitable for heavy materials. It can be used in gravity conveyors, pushing and also as side guide. Different roller pitches can be selected.

Heavy materials

The track can be designed with steel rollers if heavy materials have to be moved.

Sensitive materials

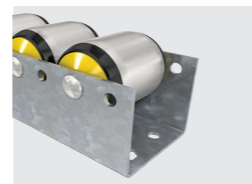
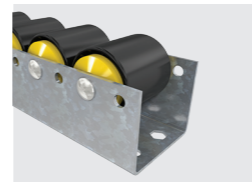
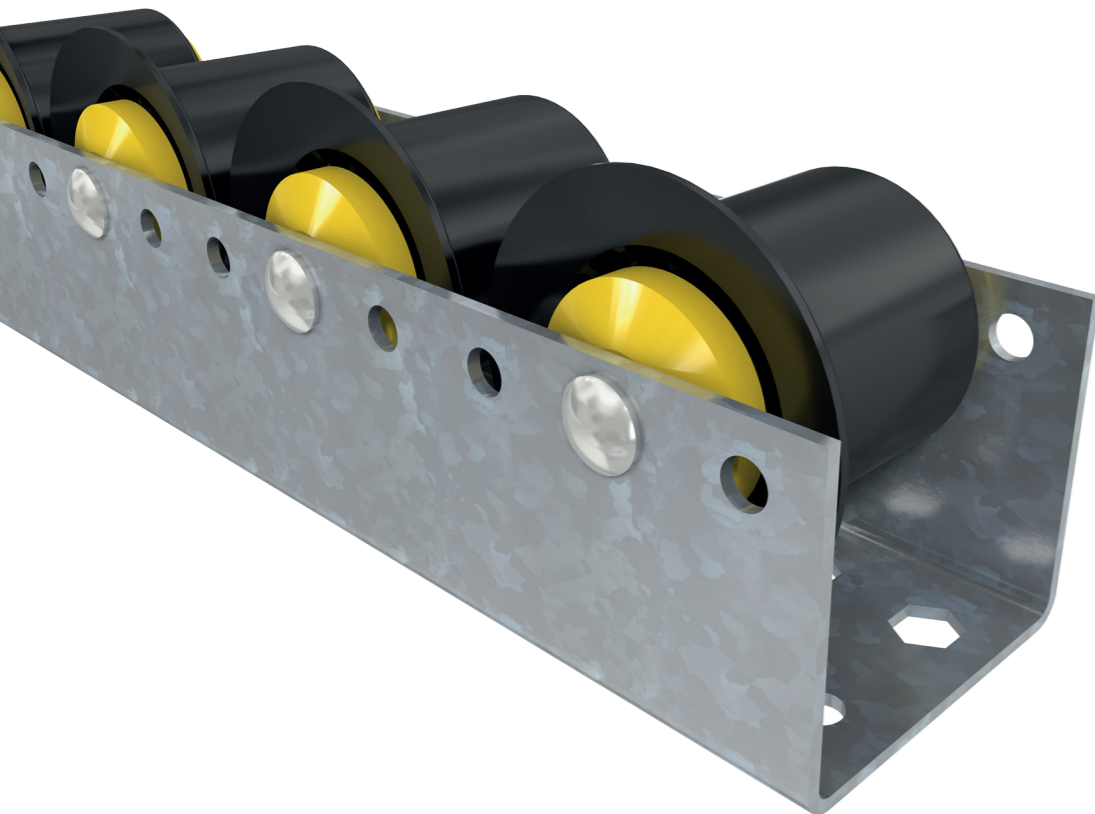
To transport goods with critical surfaces, polymer rollers can be used which minimize the risk of damages. Polymer rollers are also available in a flange design.

Robust construction

Robust rollers of series 1700 with a diameter of 50 mm are used in the track. The rollers are riveted in the profile.

Good corrosion protection

The roller track is made of zinc-plated steel.



CONVEYOR ACCESSORIES SERIES BU50

Roller track



Technical data

General technical data		
Platform	1700	1700
Roller versions	Polymer roller without flange (article number 2901) polymer roller with flange (article number 2911)	Zinc-plated steel roller without flange (article number 2955)
Max. load capacity	5,400 N	15,500 N
Max. conveyor speed	2 m/s	2 m/s
Roller pitch (P)	52 mm, 78 mm, 104 mm, 156 mm	52 mm, 78 mm, 104 mm, 156 mm
Temperature range	0 to +40 °C	-28 to +40 °C
Roller track wall thickness	2.5 mm	2.5 mm
Min. length	130 mm	130 mm
Max. length	3900 mm	3900 mm
Load shaft (riveted)	8 mm	8 mm
Material		
Roller track	Zinc-plated steel	Zinc-plated steel
Anti-static version	No	No



Load capacities of series BU50

The following load capacity tables refer to a temperature range from -5 °C to +40 °C for steel rollers and to a temperature range from 0 °C to +40 °C for polymer rollers. The maximum static load at -28 °C to -6 °C measures 350 N.

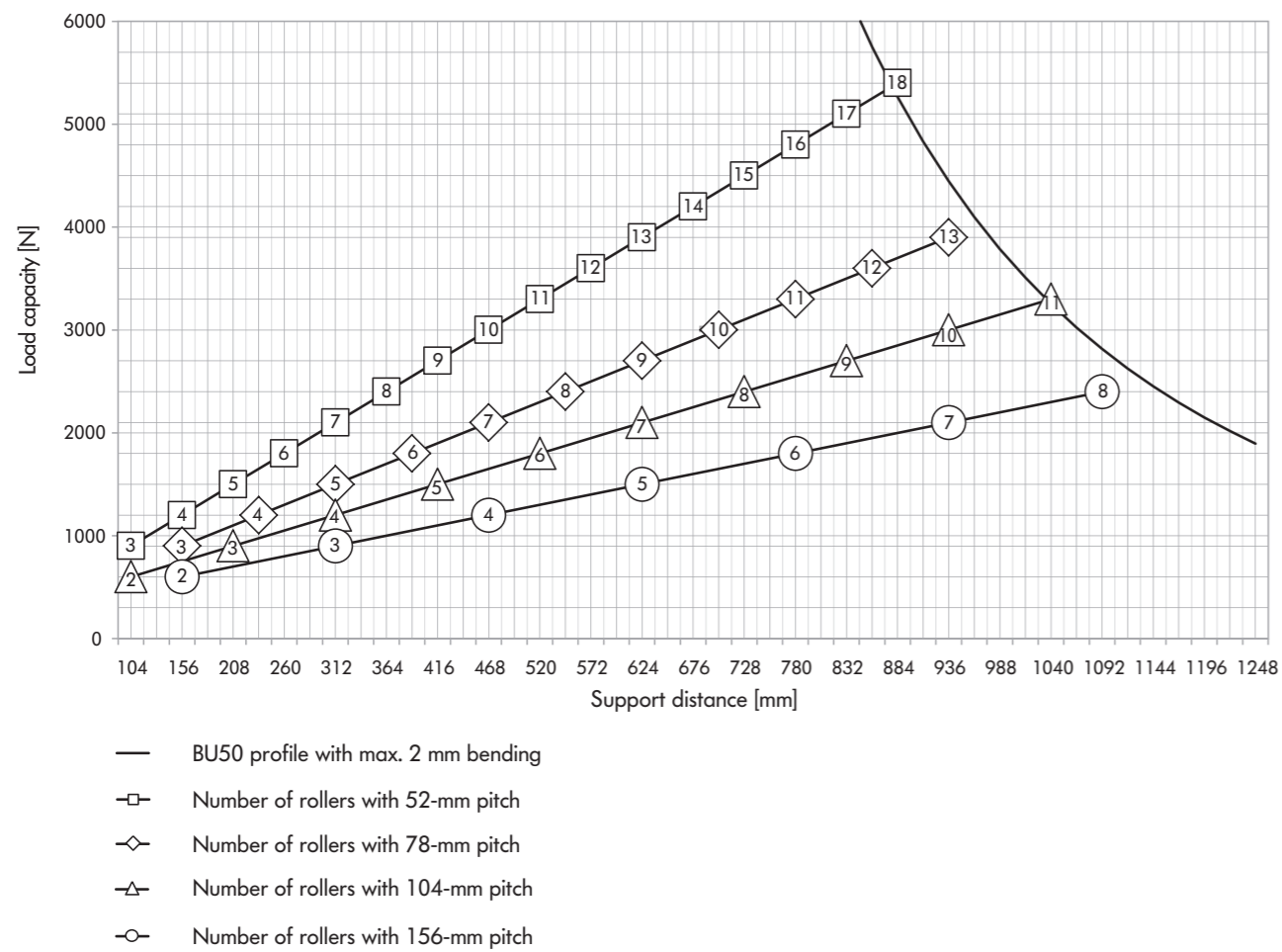


Fig.: Roller track with polymer rollers

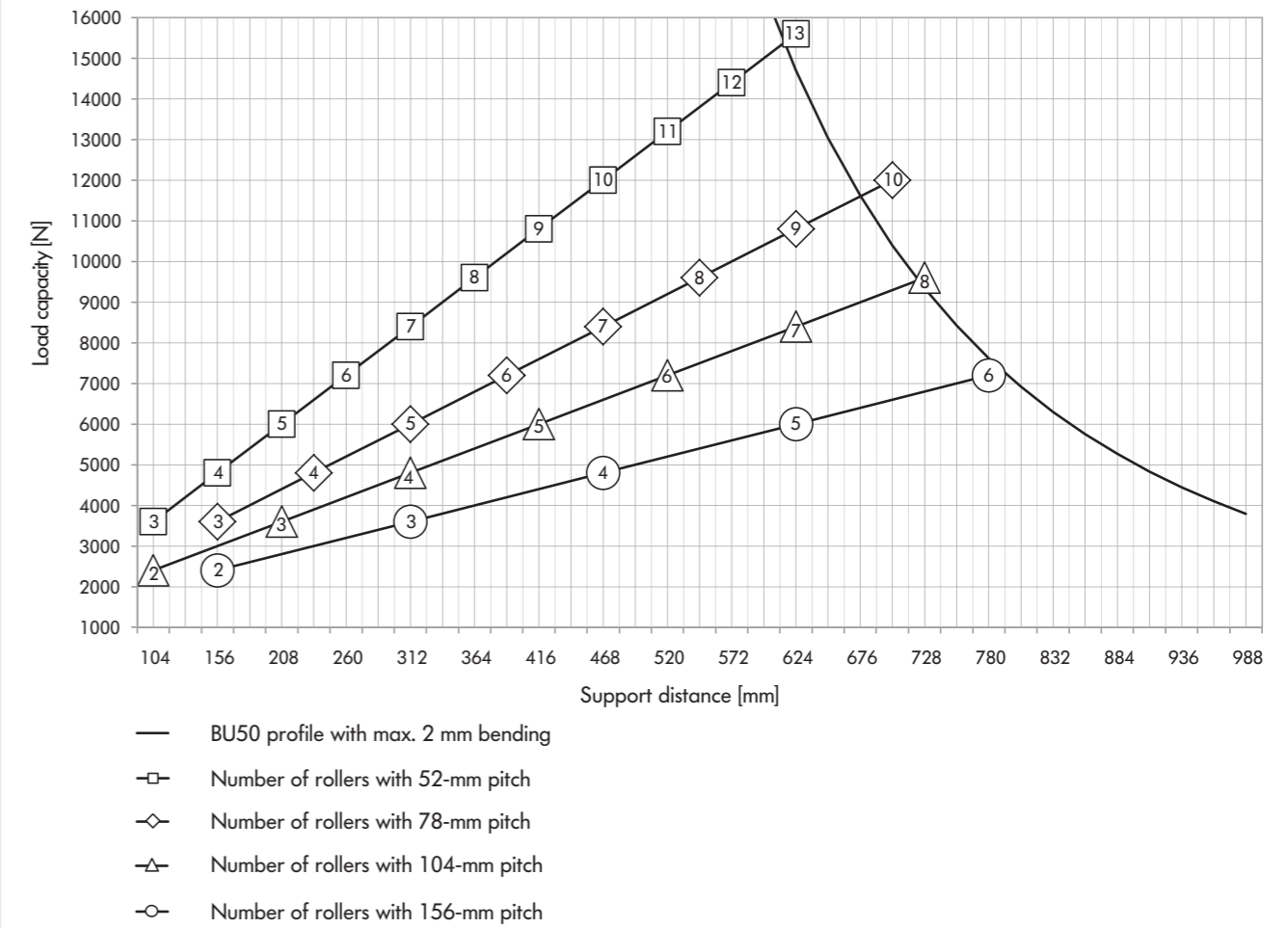


Fig.: Roller track with steel rollers

CONVEYOR ACCESSORIES SERIES BU50

Roller track



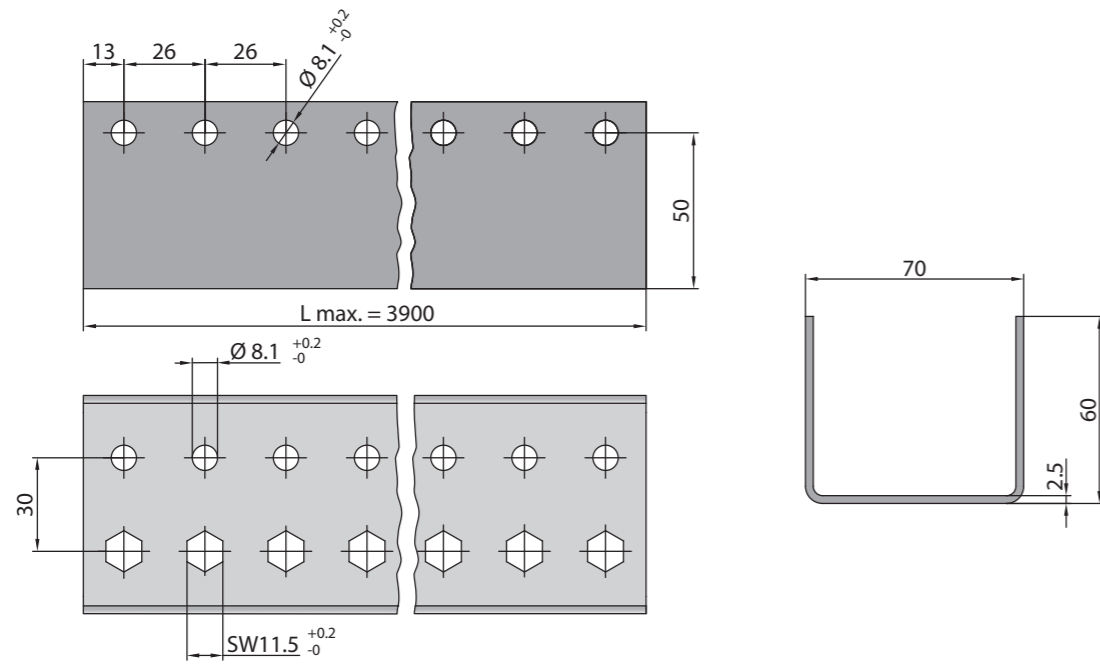
CONVEYOR ACCESSORIES SERIES BU50

Roller track



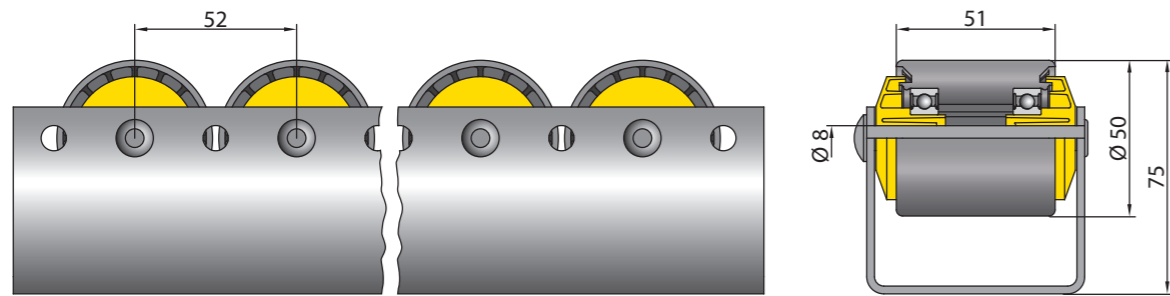
Dimensions

Track without roller

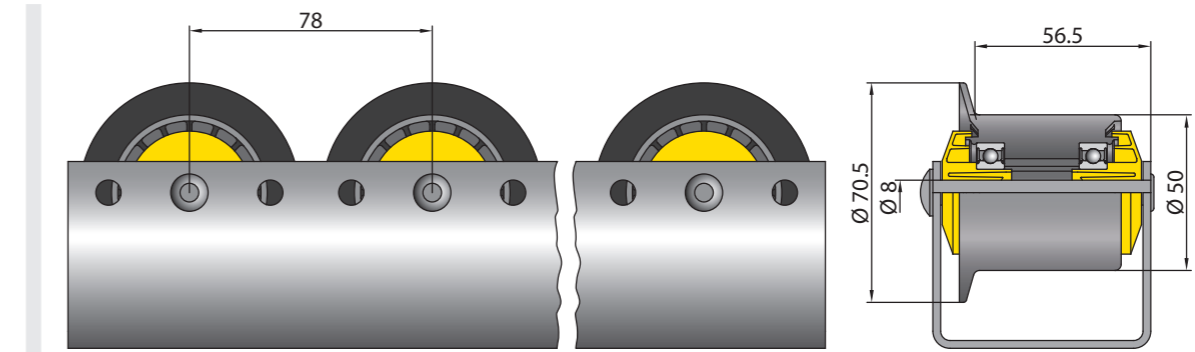


WAF = Width across flats

Track with polymer rollers



Track with polymer rollers with flange



Track with steel rollers

