

# RECTIFIERS

The rectifier operates the electromagnetic brake

Options  
Rectifiers

## Product Description

- Applications**
- ✓ For Drum motors with electromagnetic brake (see p 120)
  - ✓ Half-wave and bridge rectifier for standard applications
- Characteristics**
- ✓ External component must be covered or installed in a control box as close to the brake as possible.
  - ✓ Fast acting and multiswitch rectifier for applications in which short opening delay times are necessary

## Product Range

Input voltage V AC	Brake voltage V DC	Starting voltage V DC	Holding voltage V DC	Version	Application	Art. No.
115	104	104	52	Fast acting rectifier	A or B	61011343
230	207	207	104	Fast acting rectifier	A or B	61011343
230	104	104	104	Half wave rectifier Bridge rectifier	A or B	1001440
230	104	190	52	Phase rectifier	A	1001442
400	104	180	104	Multiswitch	A	1003326
460	104	180	104	Multiswitch	A	1003326
460	207	207	207	Half wave rectifier Bridge rectifier	A or B	1001441

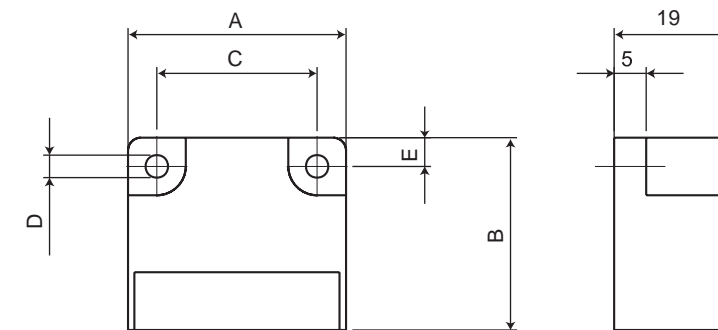
- A Continuous running application  
B Frequent start/stop application

Using a fast acting rectifier or a phase rectifier will save energy because the holding voltage is lower than the starting voltage.

Screened cables should be used to protect against EMC.

## Dimensions

### Half-wave rectifier and bridge rectifier



Art. No.	A mm	B mm	C mm	D mm	E mm
1001440	34	30	25	3.5	4.5
1001441	64	30	54	4.5	5

### Phase rectifier

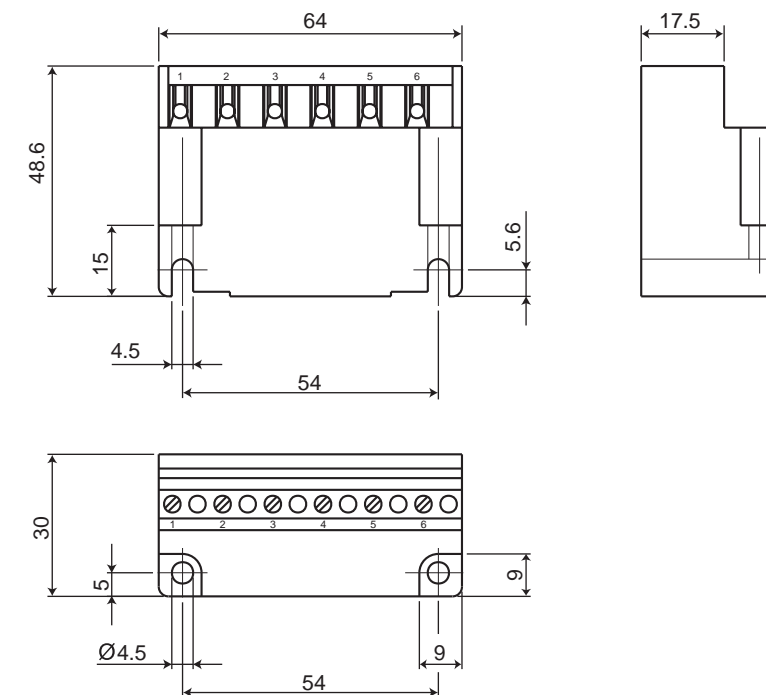


Fig.: 1001442

# RECTIFIERS

The rectifier operates the electromagnetic brake

Options  
Rectifiers

## Fast acting rectifier

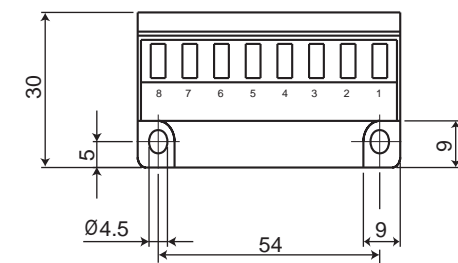
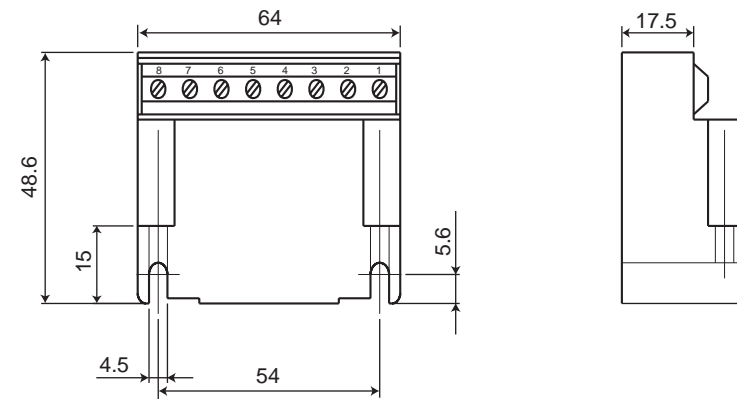


Fig.: 61011343

## Multiswitch

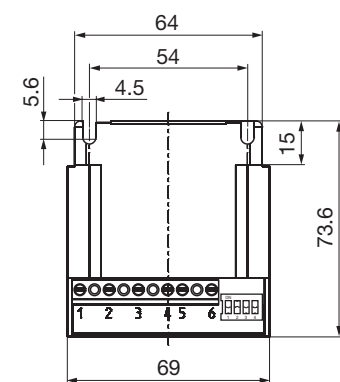
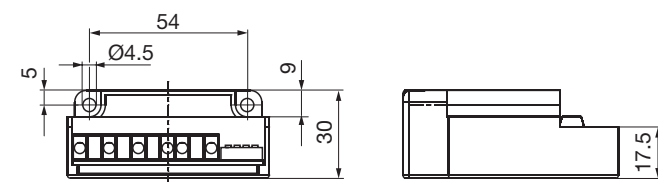


Fig.: 1003326

## Connection Diagram

Interroll recommends installing a switch between (3) and (4) for fast brake release.

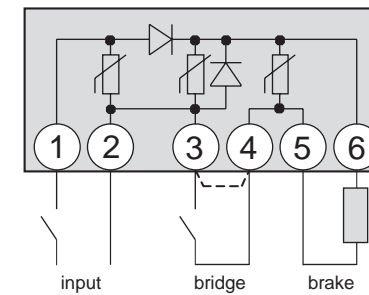


Fig.: Half-wave rectifier

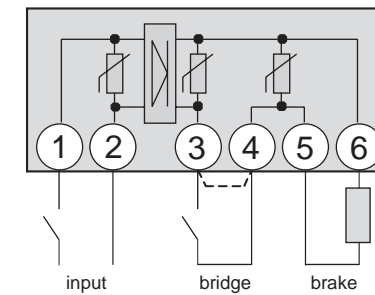


Fig.: Bridge rectifier

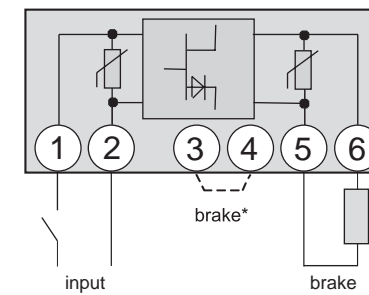


Fig.: Phase rectifier

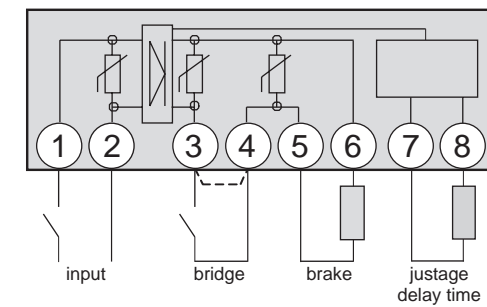


Fig.: Fast acting rectifier

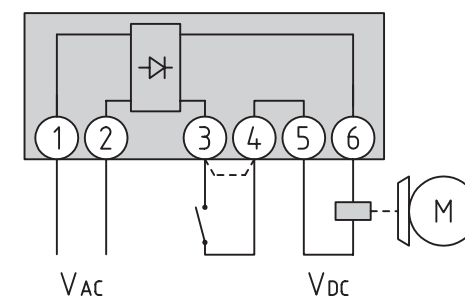


Fig.: Multiswitch